

Mitchell Lake Constructed Wetland – Phase I

Ila Drzymala, P.E.

Project Engineer

Marisa Palmer, P.E.

Manager – Engineering

Fred Flores

Contract Administrator

Diana Woltersdorf

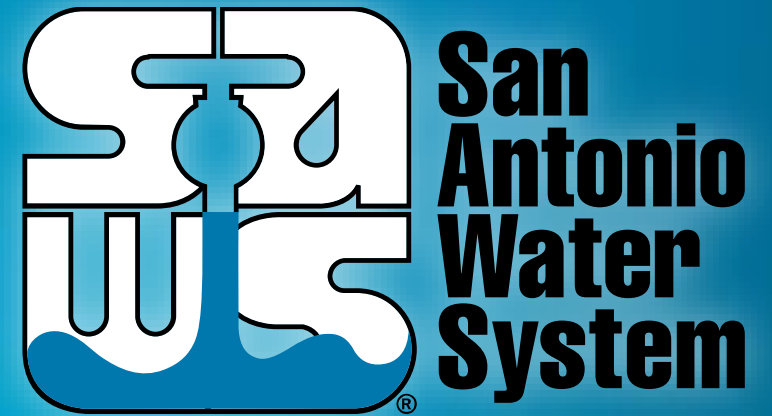
Manager – Contract Administration

Marisol Robles

SMWVB Program Manager

Timothy J. Noack, P.E.

Engineer of Record



Non-Mandatory Pre-Bid Meeting

November 2, 2018

MAKING SAN ANTONIO
WATERFUL



Oral Statements

- Oral statements or discussion during the pre-bid meeting and site visit today will not be binding, nor will it change or affect the terms or conditions within the Plans and Specifications of this Project. Changes, if any, will be addressed in writing only via an Addendum.

SMWVB Program Aspirational Goal

Industry	SMWVB Goal	Description
Heavy Civil/Utility Construction	20%	<ul style="list-style-type: none">• Typically: Low-Bid• Rarely: CMAR, Design-Build, or RFCSP

Accepted SMWVB Certifications

- Minority Business Enterprise (MBE) (Includes AABE, HABE, NABE, and ABE)
- Small Business Enterprise (SBE)
- Woman-owned Business Enterprise (WBE)
- Veteran-owned Business Enterprise (Tracked)

Accepted SMWVB Certification Agency

- **South Central Texas Regional Certification Agency**
(Includes the Texas Historically Underutilized Business “HUB” Program)

Minimum Qualifications for SMWVB recognition:

- SBE-Certified (even MBEs and WBEs)
- **Local office or local equipment yard**

Vendor Registration & Notification (VRN)

Reasons to Register in the VRN

- Receive bid notices directly in your email “Inbox”.
- Download bid documents.
- Subscribe to specific bids.
- Receive addendum notifications.

http://www.saws.org/business_center/vendor/register.cfm

Good Faith Effort Plan (GFEP) FAQs

- **Q: Is the 20% SMWB goal mandatory?**

A: No, but we ask primes to do their best with good faith outreach efforts. If the goal is not met, proof of outreach efforts is required with the bid.

- **Q: What if I am having trouble finding SMWB subcontractors?**

A: Please email the SMWVB Program Mgr. with the scopes of work you are seeking. You will receive lists of local SMWVB-certified firms to contact.

Good Faith Effort Plan (GFEP) FAQs

- **Q: What if my business is SMWVB-certified? Do I need to find SMWVB subs?**

A: If your firm is SMWVB-certified, you will most likely meet the goal. However, the GFEP is a required document, and a good faith outreach effort is still necessary.

- **Q: What if I have questions about the GFEP?**

A: Please contact the SMWVB Program Manager at 210-233-3420, or at marisol.robles@saws.org. GFEP questions can be asked at any time before deadline.

Post Award: Subcontractor Payment & Utilization Reporting (S.P.U.R.) System & Subcontractor Changes



San Antonio Water System: SMWB at SAWS - Windows Internet Explorer

https://saws.smwbe.com/Default.asp?

File Edit View Favorites Tools Help

SAWS EZlink Employee Portal San Antonio Water System

Who We Are Our Water Conservation Service Infrastructure Education Environment Jobs Business Center

What makes an idea Refreshing? Find out at RefreshingIdeas.com

HOME BUSINESS CENTER SAWS CONTRACT COMPLIANCE SYSTEM

IN THIS SECTION:

Main

https://saws.smwbe.com

SAWS SMWB Contract Compliance System

System Access Login

Username:

Password:

Remember username

Login

[Home](#)

- [Contact Us & Support](#)
- [Forgot Password](#)
- [Account Lookup](#)
- [Help/First Time Visitors](#)

San Antonio Water System is pleased to offer our Contract Compliance System tracking SMWBE participation!

The Contract Compliance System is designed to streamline and automate your reporting requirements. The system is accessible to all firms doing business with SAWS and includes the following key features:

- Automated communication with contractors via email regarding compliance issues
- Submission of contractors' utilization reports online with automated tracking of contract goals and participation
- Automatic verification of subcontractor payments
- Immediate feedback on accuracy of certified payrolls
- Elimination of paper-based reporting and lengthy payroll validation delays

Contract Requirements

Prevailing Wage Rate and Labor Standards – Section 2.10 of the General Conditions

- Certified payroll to be submitted on weekly basis
- Wage decisions are included within the specifications
- Contractors to utilize LCP Tracker
- Site visits are random and unannounced
- Interviews will be Conducted and will be private & confidential
- Payroll records are subject to review
- All apprenticeship programs will need to be approved by Department of Labor prior to starting
- Contractors are responsible for sub-contractor payroll
- Late payrolls delay contractor payments from SAWWS

Contract Requirements

Insurance— Section 5.7 of the General Conditions

- Installation Floater is required
- Compliant prior to executing the contract
- Will ask for insurance prior to Board award to expedite execution of the contract

Bid Packet Preparation

- Utilize the Bid Packet Checklist within the specifications
- SAWWS is requesting that the Statement of Bidder's Experience be completed and included by all bidders
- Double check all mathematical calculations and verify all extensions
- References and contact information must be verified prior to submitting bid(s)
- Addendums are now acknowledged on the Bid Proposals

Addendum(s)

Revisions, Clarifications, Questions and Answers (Q&A's)

- Questions deadline is November 6, 2018 by 4 P.M.
- Q&A's will be posted on SAWS website on November 8, 2018 by 4 P.M.
- Check our website regularly for the addendum posting.
- It is possible to have multiple addendums during the time frame in addition to the scheduled final addendum

Bid Opening Dates/Times

November 13, 2018 at 10:00 A.M.

- Bids may not be late
- Make arrangements if mailing and send directly to Contract Administration
- If delivering in person, bid packets will be turned in at Counter Services

Supplemental Conditions

- Reimbursement for permit fees from respective bid line items upon submission of proof of payment
- Pre-Construction & Post-Construction Videos
- Installation Floater is required
- Liquidated Damages set at \$375.00 per day

San Antonio water system

Mitchell lake

Constructed Wetland – Phase I

Pre-Bid Meeting,
11/2/2018



Mitchell Lake Constructed Wetland – Phase I

Project Information

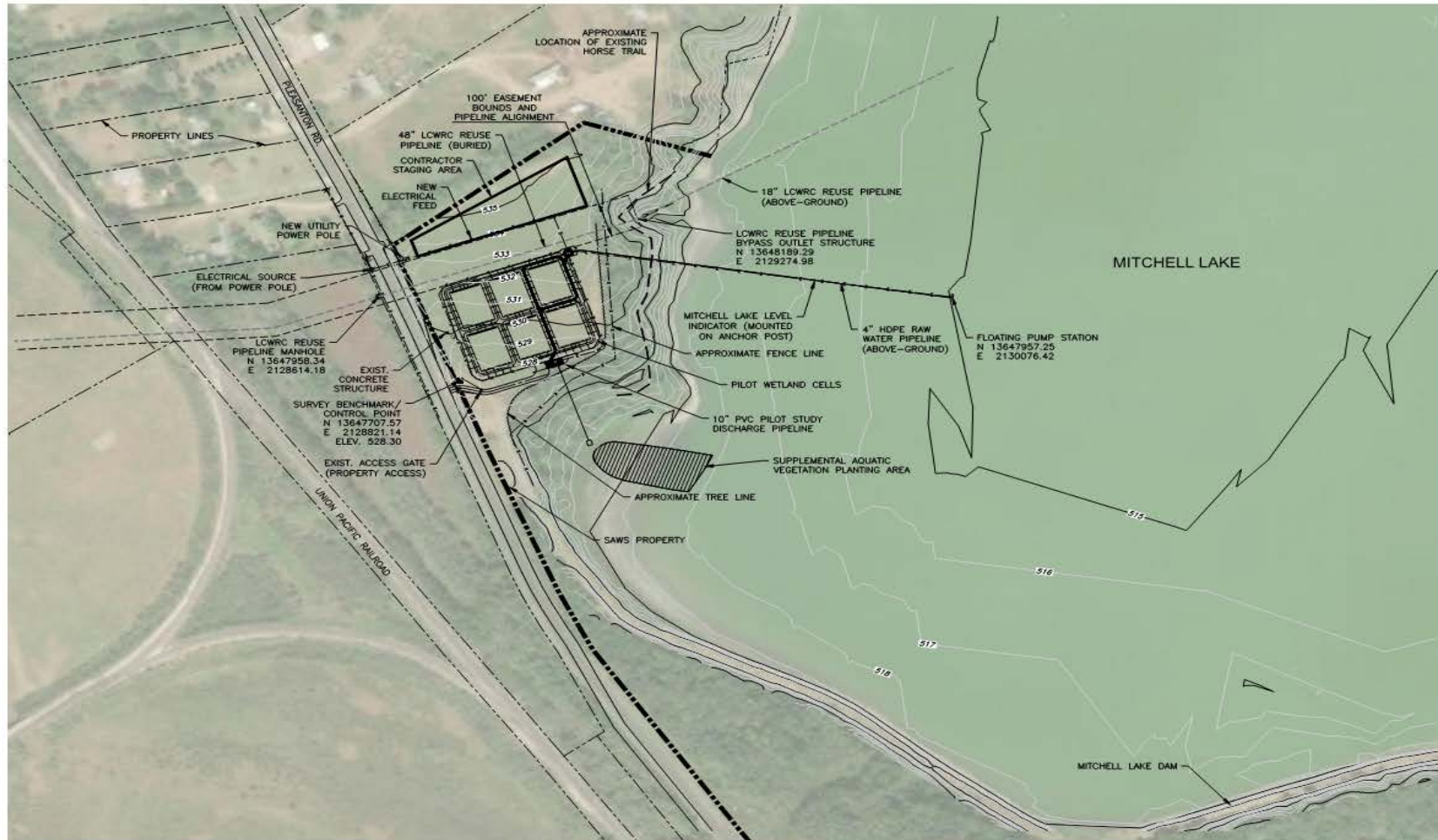
- Owner: SAWWS
 - Project Manager: Gregg Eckhardt
 - Project Engineer: Ila Drzymala
- Prime Engineer: Alan Plummer Associates, Inc. (APAI)
 - Project Engineer: Ryan Pierce
- Electrical Engineer: Gupta & Associates, Inc.
 - Project Engineer: Daniel Ghobrial
- Construction Support: Vickrey & Associates, Inc.
 - David Babineaux

Project Background

- SAWS owns and operates Mitchell Lake as a permitted wastewater treatment unit with water quality limits
- SAWS and APAI (Engineer) are evaluating the feasibility of using a constructed wetland to remove algae and nutrients in order to improve water quality and meet water quality goals
- This project is a small-scale pilot study that will help determine whether a large-scale, permanent wetland should be constructed downstream of Mitchell Lake

Project Summary

- Project consists of:
 - Constructed wetland (6 cells, approx. 1.3 ac), surrounded by earthen berms w/ 6” thick clay liner; planted with aquatic vegetation
 - Floating pump station (submersible pump, 2 hp) in Mitchell Lake
 - Small diameter pressure pipeline (approx. 1,000 LF) and gravity yard piping
 - Pre-fabricated flow control structure installation
 - Site work, including culvert/flex base driveway/perimeter fence
 - Electrical and instrumentation, including connection to CPS power
- Project concept is a pump station to continuously pump from the lake into an upstream splitter box, flow by gravity through three parallel trains, and collect in one final pipeline to discharge back to the lake



- NOTES:
1. PROPERTY LINE LOCATIONS TAKEN FROM BEXAR COUNTY APPRAISAL DISTRICT WEBSITE.

ALAN P. LUMBER
ASSOCIATES, INC.
ENGINEERS AND ARCHITECTS
6801 LA CIMA DRIVE, SUITE 600
AUSTIN, TEXAS 78732-9843
PHONE 512-453-9865 FAX 512-453-2525
TELETYPE 512-453-9865 (FAX) 512-453-2525

NO. DATE	REVISION

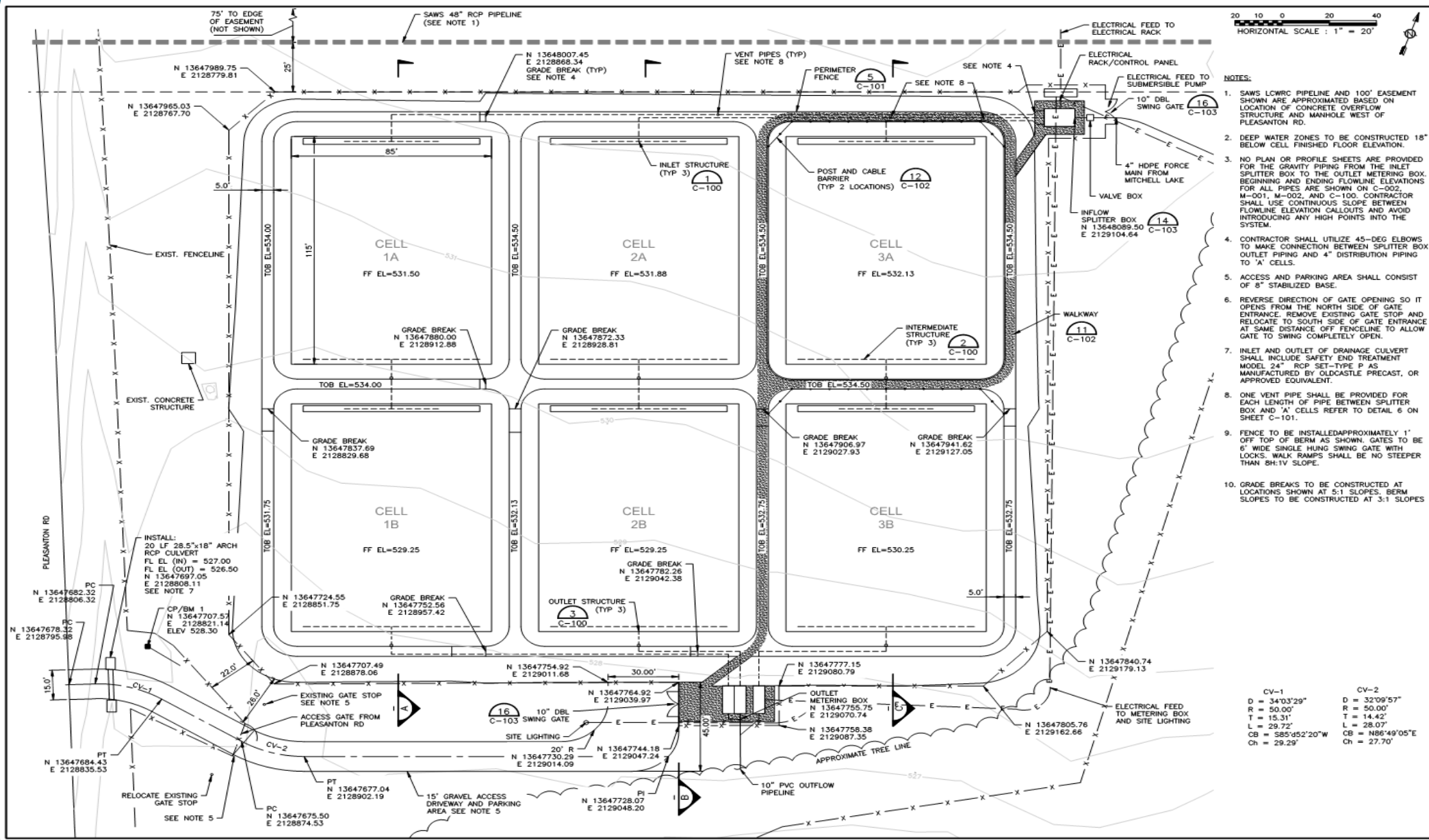
SAN ANTONIO WATER SYSTEM
MITCHELL LAKE CONSTRUCTED WETLAND - PHASE I
GENERAL
SITE PLAN



BAR IS ONE INCH ON ORIGINAL DRAWING.
ONE INCH
DESIGNED BY: R. PIERCE
DRAWN BY: ADAM
CHECKED BY: T. HIGACK
REVIEWED BY: T. HIGACK
Date: 10/19/2018 4:24 PM
Sheet: G-003
0535-012-01

Mitchell Lake Constructed Wetland – Phase I





- NOTES:**
- SAWS LCWRG PIPELINE AND 100' EASEMENT SHOWN ARE APPROXIMATED BASED ON LOCATION OF CONCRETE OVERFLOW STRUCTURE AND MANHOLE WEST OF PLEASANTON RD.
 - DEEP WATER ZONES TO BE CONSTRUCTED 18" BELOW CELL FINISHED FLOOR ELEVATION.
 - NO PLAN OR PROFILE SHEETS ARE PROVIDED FOR THE GRAVITY PIPING FROM THE INLET SPLITTER BOX TO THE OUTLET METERING BOX. BEGINNING AND ENDING FLOWLINE ELEVATIONS FOR ALL PIPES ARE SHOWN ON C-002, M-001, M-002, AND C-100. CONTRACTOR SHALL USE CONTINUOUS SLOPE BETWEEN FLOWLINE ELEVATION CALLOUTS AND AVOID INTRODUCING ANY HIGH POINTS INTO THE SYSTEM.
 - CONTRACTOR SHALL UTILIZE 45-DEG ELBOWS TO MAKE CONNECTION BETWEEN SPLITTER BOX OUTLET PIPING AND 4" DISTRIBUTION PIPING TO 'A' CELLS.
 - ACCESS AND PARKING AREA SHALL CONSIST OF 8" STABILIZED BASE.
 - REVERSE DIRECTION OF GATE OPENING SO IT OPENS FROM THE NORTH SIDE OF GATE ENTRANCE. REMOVE EXISTING GATE STOP AND RELOCATE TO SOUTH SIDE OF GATE ENTRANCE AT SAME DISTANCE OFF FENCELINE TO ALLOW GATE TO SWING COMPLETELY OPEN.
 - INLET AND OUTLET OF DRAINAGE CULVERT SHALL INCLUDE SAFETY END TREATMENT MODEL 24" RCP SET-TYPE P AS MANUFACTURED BY OLDCASTLE PRECAST, OR APPROVED EQUIVALENT.
 - ONE VENT PIPE SHALL BE PROVIDED FOR EACH LENGTH OF PIPE BETWEEN SPLITTER BOX AND 'A' CELLS REFER TO DETAIL 6 ON SHEET C-101.
 - FENCE TO BE INSTALLED APPROXIMATELY 1' OFF TOP OF BERM AS SHOWN. GATES TO BE 6" WIDE SINGLE HUNG SWING GATE WITH LOCKS. WALK RAMPS SHALL BE NO STEEPER THAN 8:1V SLOPE.
 - GRADE BREAKS TO BE CONSTRUCTED AT LOCATIONS SHOWN AT 5:1 SLOPES. BERM SLOPES TO BE CONSTRUCTED AT 3:1 SLOPES

NO.	DATE	REVISION

A.L.A.N. PLUMMER ASSOCIATES, INC.
 ENGINEERS AND ARCHITECTS
 6000 LA CALMA DRIVE, SUITE 600
 HOUSTON, TEXAS 77036
 PHONE: 281.445.4444 FAX: 281.445.2325
 TEXAS REGISTERED ENGINEER (P) 113

San Antonio Water System
 WETLAND CELL PLAN

SAN ANTONIO WATER SYSTEM
 MITCHELL LAKE CONSTRUCTED WETLAND - PHASE I

CV-1
 D = 34'0.3'29"
 R = 50.00'
 T = 15.31'
 L = 29.72'
 CB = S85°45'2'20"W
 Ch = 29.29'

CV-2
 D = 32'09'57"
 R = 50.00'
 T = 14.42'
 L = 28.07'
 CB = N86°49'05"E
 Ch = 27.70'

BAR IS ONE INCH ON ORIGINAL DRAWING.
 ONE INCH
 DESIGNED BY: DICKMAN
 DRAWN BY: PIERCE
 CHECKED BY: NOACK
 REVIEWED BY: NOACK
 Scale: of
 No. of
C-001
 0535-012-01

Mitchell Lake Constructed Wetland – Phase I



Special Conditions

- Contractor shall bring the draft SOV and construction schedule to the pre-construction meeting
- Contractor shall achieve 80% plant viability per the specification prior to receiving Substantial Completion.
- Contractor shall manage, operate, and maintain Wetland system for 60 days following Substantial Completion to ensure vegetation fills in appropriately
- Construction schedule shall reflect Contractor placing priority on establishing aquatic vegetation cover as soon as possible

Special Conditions (Cont'd)

- Topsoil cover for bottom of wetland cells is to be taken from off-site Cook Trust property approx. 0.5 miles south, which is contingent upon SAWWS having access to property. Otherwise use site topsoil or imported.
- Contractor has \$50,000 allowance for pre-startup/commissioning to cover unforeseen items.

Additional Information

- Lake sediments are of uncertain condition so Contractor needs to be careful accessing lake; no docks present and a flat-bottomed boat is probably easiest to maneuver
- Proposed alignment of pipelines is approximate; Contractor may field-adjust as needed to avoid impacting trees, roots, rocks.
- Aquatic vegetation planting will need to be conducted by a pre-approved planting subcontractor (per the specs); plants shall be field-collected where possible (locations provided in spec).

Additional Information (Cont'd)

- Critical milestone is planting of aquatic vegetation by late Spring
- No potable water or sanitary sewer available on-site
- Staging area is shown on plans north of LCWRC pipeline easement; contractor shall take care not to damage pipeline
- Monthly progress meetings will be scheduled
- Record drawings required per specs

Permitting

- Contractor is responsible for acquiring SWPPP permit
- Environmental/site work permits have been applied for by SAWS/Engineer and will need to be picked up at DSD office by Contractor
- Application fees will be reimbursed by SAWS

Questions?

Mitchell Lake Constructed Wetland – Phase I



Item No.	Item Description	Unit	Quantity	Unit Bid Price	Total Price
1	Site/Civil: The total amount for the earthwork (including site preparation, berms, clay liner, and topsoil placement), pressure and gravity piping, purchase/installation of pre-fabricated flow control structures, flexible base driveway/parking, walkway, concrete slabs, fencing, and culvert installation work per Contract Documents. As shown on the Drawings and specified in the Contract Documents, complete in-place.	LS	1.00	\$	\$
2	Mechanical/Electrical/Instrumentation and Controls: The total amount for the purchase/installation of a pre-fabricated floating pump station, pump motor starter, panelboard, electrical rack, conduit/wiring, water level metering and transmittal, and security lighting per Contract Documents. As shown on the Drawings and specified in the Contract Documents, complete in-place.	LS	1.00	\$	\$
3	Pre-startup/Commissioning Construction Items: Allowance for \$50,000.00 for unforeseen construction related items (not included in the scope) associated with pre-start up and start-up services that are necessary to provide for an operational and functional system. This shall include furnishing all labor, materials, tools, equipment and incidentals required to construct these project related items at SAWS request, and to be negotiated under the contract terms and conditions for complete in place.	LS	1.00	\$50,000.00	\$50,000.00
4	Permitting Fees: Allowance for \$5,000.00 fees associated with this project. This shall include furnishing all labor, materials, tools, equipment, incidentals, required to obtain all necessary permits. Contractor to pay and be reimbursed actual amount by SAWS.	LS	1.00	\$5,000.00	\$5,000.00
5	CPSE Allowance: Allowance for \$25,000.00 for CPS Energy fees associated with the project. This shall include furnishing all labor, materials, tools, equipment and incidentals required to obtain all necessary permits. Contractor to pay and be reimbursed actual amount by SWS.	LS	1.00	\$25,000.00	\$25,000.00
6	Operation/Maintenance/Management of the System During Grow-in Period: This item shall include overseeing operation of the wetland system for 60 days after plant viability assessment has been approved by Engineer and includes operating pump system to maintain Engineer-recommended flows and water depths within wetland cells. Cost shall be on a per day basis.	Day	60.00	\$	\$
7	Mobilization and Demobilization: This item shall include project move-in and move-out of personnel and equipment, for all work including furnishing all labor, materials, tools, equipment and incidentals required to mobilize, demobilize, clean site upon project completion, and bond and insure the Work for the Project, in accordance with the Contract Documents, complete in place. Maximum of 10% of the total of Line Items 1 through 2.	LS	1.00	\$	\$

Contact Information

<u>Contact Name</u>	<u>Title</u>	<u>Telephone Number</u>	<u>Email address</u>
Fred Flores	Contract Administrator	210-233-3404	Fred.Flores@saws.org
Marisol Robles	SMWVB Program Manager	210-233-3420	Marisol.Robles@saws.org

Mitchell Lake Constructed Wetland – Phase I

Ila Drzymala, P.E.

Project Engineer

Marisa Palmer, P.E.

Manager – Engineering

Fred Flores

Contract Administrator

Diana Woltersdorf

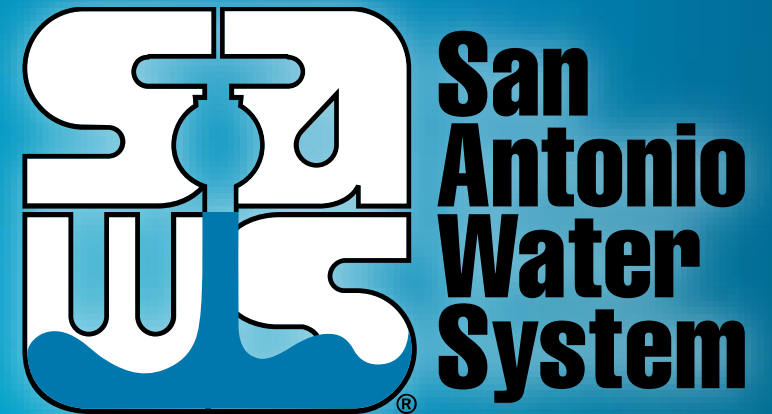
Manager – Contract Administration

Marisol Robles

SMWVB Program Manager

Timothy J. Noack, P.E.

Engineer of Record



Non-Mandatory Pre-Bid Meeting

November 2, 2018

MAKING SAN ANTONIO
WATERFUL

